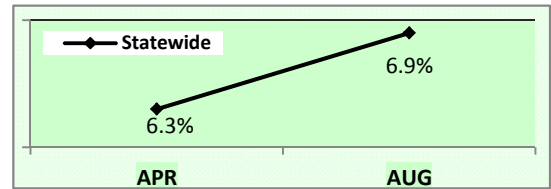
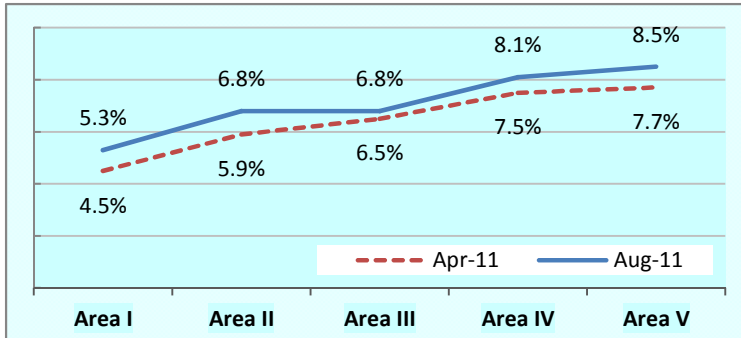
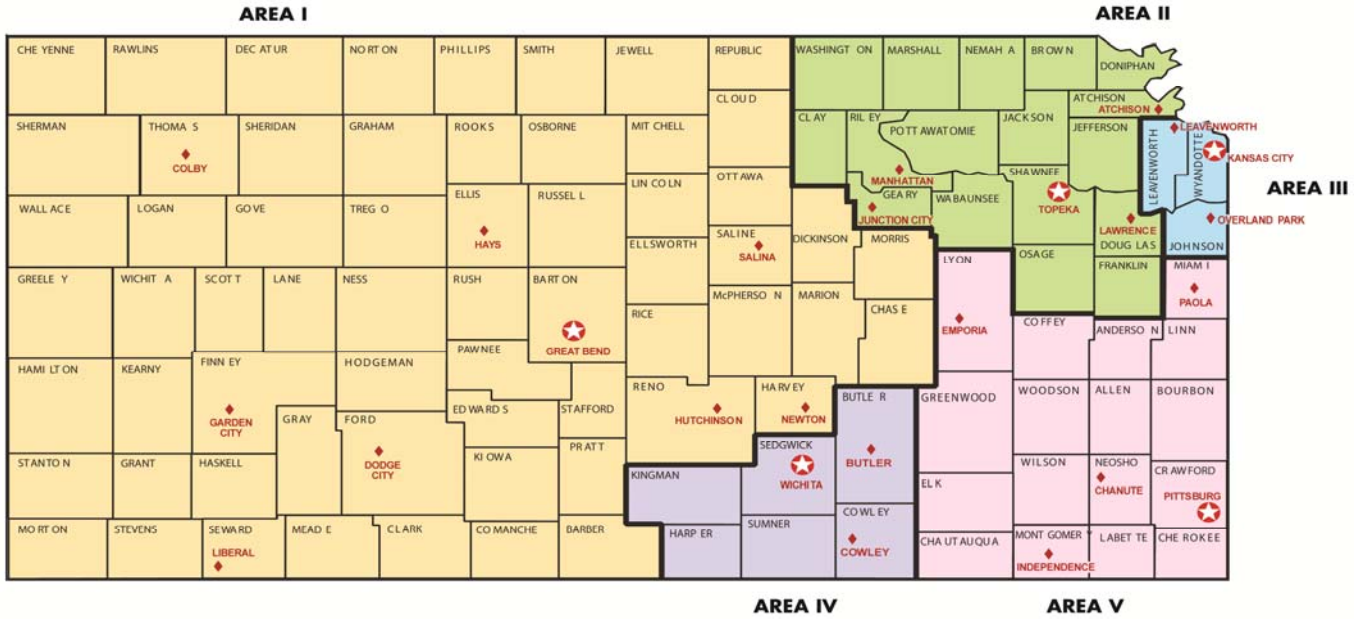


DASHBOARD

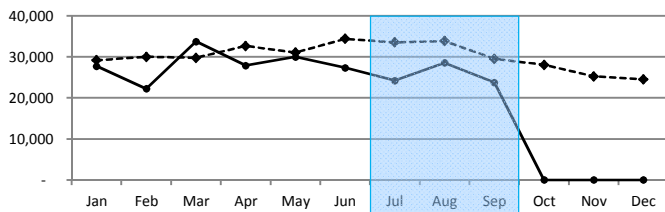
KWSB Meeting Date: 10/26/11

Cumulative data for PY 2011 (07/01/11 - 06/30/12)

Unemployment Rate (April 2011 - Aug 2011)

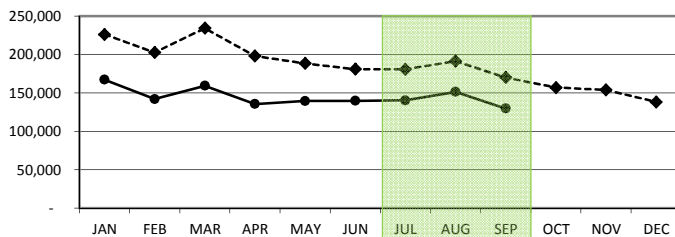


KANSASWORKS Utilization (July 2011 - Sep 2011)



Workforce Center Traffic

Statewide - 1st Quarter	
---- 2010	96,929
— 2011	76,549
% Change	-21.0%



KANSASWORKS.com Visitors

Statewide - 1st Quarter	
---- 2010	567,165
— 2011	414,508
% Change	-26.9%

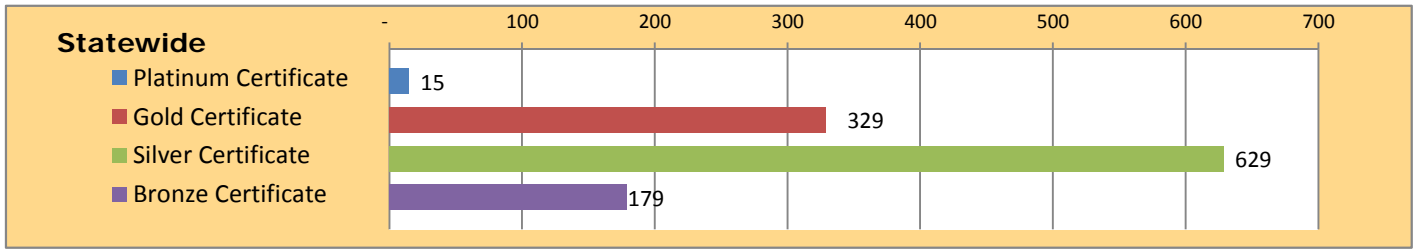
DASHBOARD

KWSB Meeting Date: 10/26/11

Cumulative data for PY 2011 (07/01/11 - 06/30/12)

KANSASWORKS Certificates & Credentials (July 2011 - Sep 2011)

KANSAS WORKReady! Certificates



KANSASWORKS Performance (July 2011 - Sep 2011)

WIA Performance (9 measures)

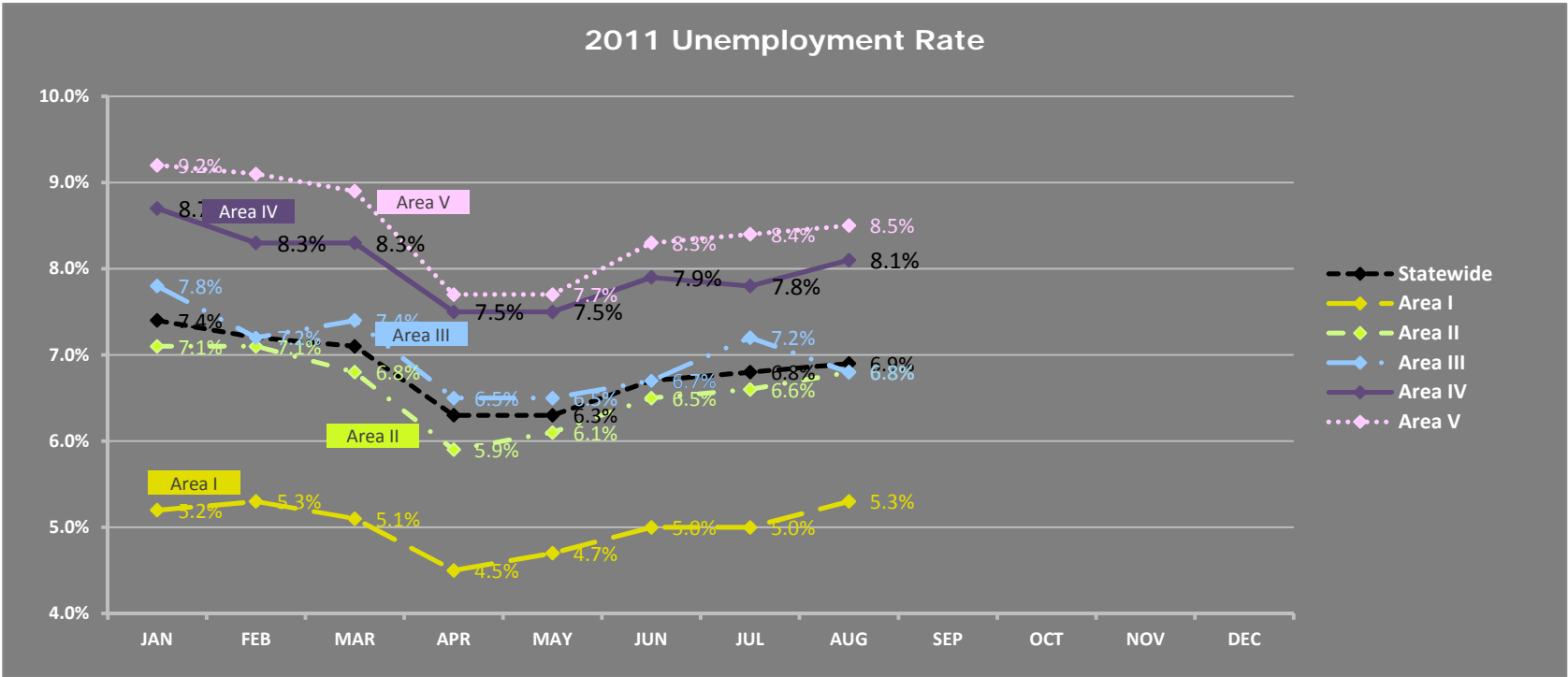
	No. of Measures		
	↑Goal	=Goal	↓Goal
State	4	5	
Area I	6	2	1
Area II	4	4	1
Area III	3	6	
Area IV	3	5	1
Area V	4	4	1

Unemployment Rate

Quarter
1st

Program Year
2011

State Board Meeting
10/26/11



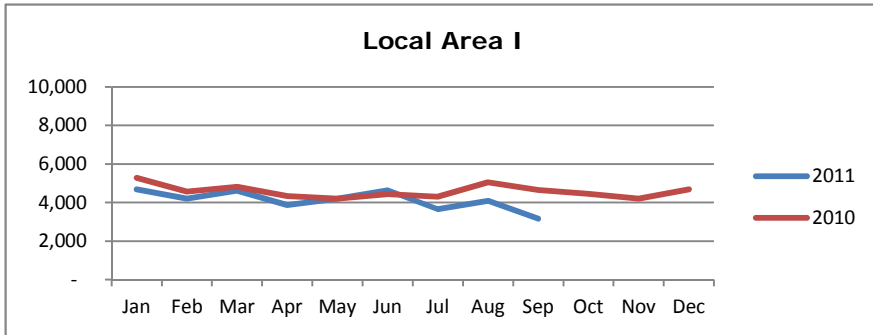
2011												
	JAN	FEB	MAR	APR	MAY	JUN	JUL	AUG	SEP	OCT	NOV	DEC
Statewide	7.4%	7.2%	7.1%	6.3%	6.3%	6.7%	6.8%	6.9%				
Area I	5.2%	5.3%	5.1%	4.5%	4.7%	5.0%	5.0%	5.3%				
Area II	7.1%	7.1%	6.8%	5.9%	6.1%	6.5%	6.6%	6.8%				
Area III	7.8%	7.2%	7.4%	6.5%	6.5%	6.7%	7.2%	6.8%				
Area IV	8.7%	8.3%	8.3%	7.5%	7.5%	7.9%	7.8%	8.1%				
Area V	9.2%	9.1%	8.9%	7.7%	7.7%	8.3%	8.4%	8.5%				

NOTE: Not seasonally adjusted

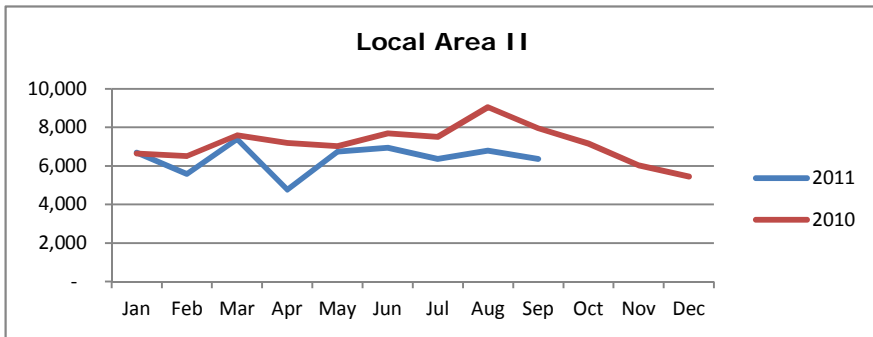
[Return to DASHBOARD](#)

Workforce Center Traffic

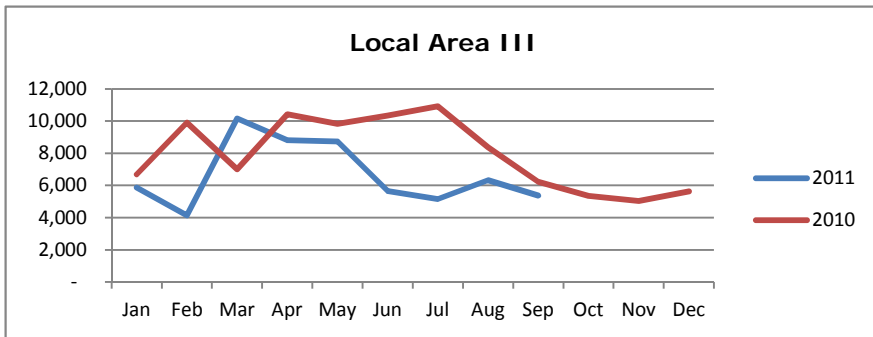
Quarter 1st
Program Year 2011
State Board Meeting 10/26/11



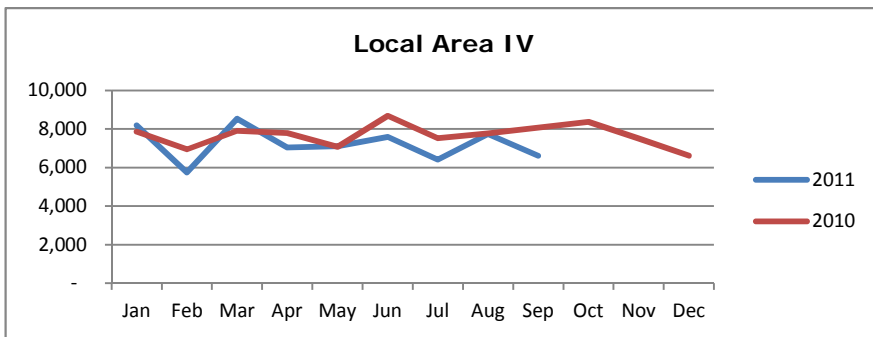
Change from 2010 Quarter
Number (3,122)
Percent -22.3%



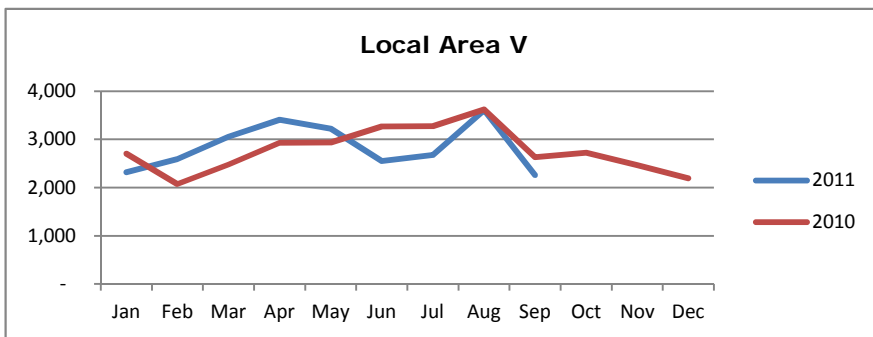
Change from 2010 Quarter
Number (5,007)
Percent -20.4%



Change from 2010 Quarter
Number (8,675)
Percent -34.0%



Change from 2010 Quarter
Number (2,597)
Percent -11.1%



Change from 2010 Quarter
Number (979)
Percent -10.3%

KANSASWORKS.com

Quarter

1st

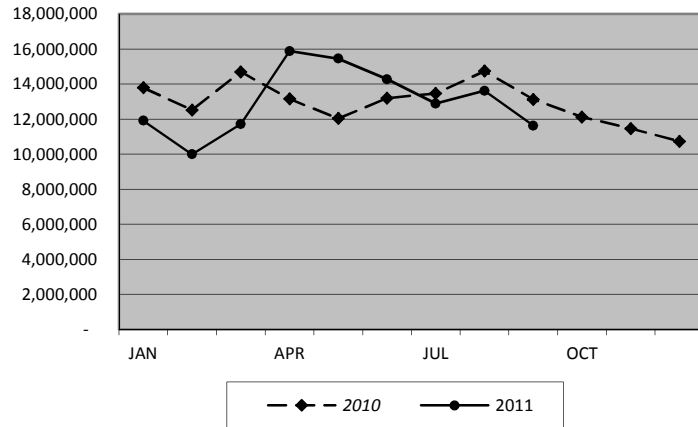
Program Year

2011

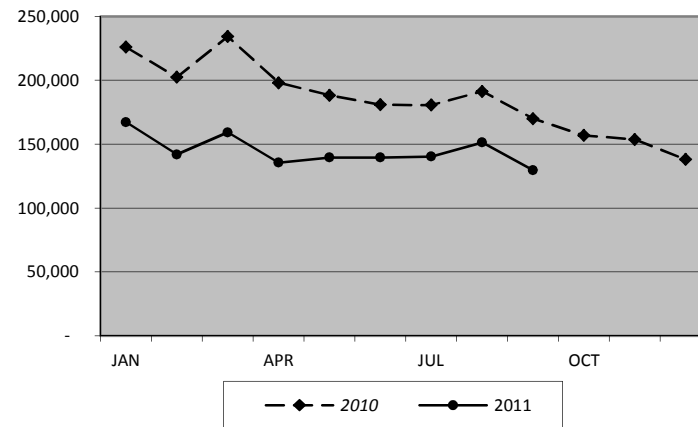
State Board Meeting

10/26/11

KANSASWORKS.com Hits



KANSASWORKS.com Visitors



	2008	2009	2010	2011
JAN	7,609,932	8,078,667	13,784,054	11,904,130
FEB	6,902,949	7,714,042	12,514,958	9,988,259
MAR	6,555,394	8,970,317	14,689,624	11,716,029
APR	6,937,845	8,939,558	13,148,506	15,882,389
MAY	6,212,614	8,216,397	12,037,001	15,454,793
JUN	6,115,152	11,130,066	13,191,158	14,273,489
JUL	6,867,431	11,813,251	13,457,528	12,884,386
AUG	6,616,065	12,743,422	14,741,782	13,616,694
SEP	6,603,409	12,159,454	13,124,504	11,619,361
OCT	7,013,721	12,328,560	12,120,465	
NOV	6,071,391	11,699,499	11,461,567	
DEC	6,354,356	11,050,176	10,725,508	

	2008	2009	2010	2011
JAN	159,857	139,904	226,026	167,196
FEB	145,695	134,002	202,441	141,907
MAR	91,548	151,598	234,259	159,156
APR	98,199	155,805	198,036	135,484
MAY	93,027	147,885	188,269	139,500
JUN	89,332	160,133	180,860	139,524
JUL	96,790	161,969	180,600	140,285
AUG	95,738	180,336	191,278	151,362
SEP	97,364	184,449	170,018	129,573
OCT	104,999	192,766	156,870	
NOV	102,376	190,728	153,684	
DEC	107,638	170,371	138,047	

Note: KANSASWORKS.com went live in March 2008; previous observations are from Kansas Job Link.

[Return to DASHBOARD](#)

Kansas WORKReady! Certificates

Quarter

1st

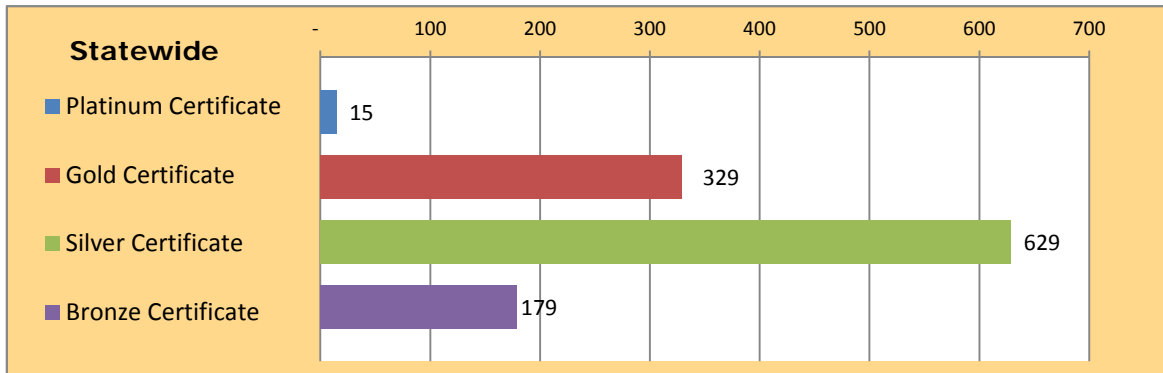
Program Year

PY11

State Board Meeting

10/26/11

Kansas WORKReady!	Area I	Area II	Area III	Area IV	Area V	Statewide
Platinum Certificate	-	2	3	8	2	15
Gold Certificate	32	38	64	166	29	329
Silver Certificate	47	43	129	339	71	629
Bronze Certificate	9	12	57	77	24	179
Total Certificates	88	95	253	590	126	1,152



[Return to DASHBOARD](#)

PERFORMANCE: Workforce Investment Act (WIA)

Quarter	Program Year	State Board Meeting					
1st	PY11	10/26/11					
	Goal Sanction	AREA I	AREA II	AREA III	AREA IV	AREA V	STATEWIDE
Adult							
Entered Employment ¹	70.0%						
	56.0%	56.3%	59.5%	63.0%	53.4%	62.9%	60.0%
Employment Retention ²	84.0%						
	67.2%	85.9%	83.8%	78.5%	74.9%	79.0%	79.7%
Average Earnings ³	\$12,500						
	\$10,000	\$15,126	\$14,321	\$12,384	\$11,303	\$11,714	\$12,698
Dislocated Worker							
Entered Employment ¹	80.0%						
	64.0%	81.1%	71.7%	69.3%	73.3%	82.7%	75.1%
Employment Retention ²	87.0%						
	69.6%	100.0%	93.0%	88.5%	92.9%	91.2%	92.0%
Average Earnings ³	\$15,700						
	\$12,560	\$16,458	\$15,399	\$19,933	\$15,306	\$11,599	\$16,653
Youth							
Placement in Employment or Education ⁴	64.0%						
	51.2%	57.9%	44.0%	57.4%	100.0%	75.0%	57.0%
Attainment of Degree or Certification ⁵	52.0%						
	41.6%	53.3%	66.7%	43.9%	85.7%	50.0%	50.9%
Literacy and Numeracy Gains ⁶	42.0%						
	33.6%	0.0%	62.5%	59.3%	#DIV/0!	#DIV/0!	56.8%

Legend:

Above Goal
Within Goal
Below Goal

[Return to DASHBOARD](#)